

🕒 Completion - AUG 2026

Sobha Seahaven

Dubai Marina



Jan Petrovic

Slovenia

 **Verified Agent**

Phone

+38640772980

Email

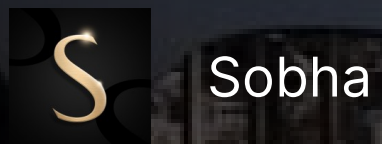
info@petrodeluxe.si

Website

Instagram:

 WhatsApp

 Email




Sobha Seahaven

 Furnishing - No

 Parking -

 Floors - G + 67 floors

 Service charge -
21 AED/sqft

Project general facts

Sobha Seahaven by Sobha Group, a brand new residential development offering a choice of luxury design 1, 2 & 3 bedroom apartments located at Dubai Harbour. These amazing design three towers collection are laced with lower level of surprising lifestyle amenities, where the highest of them comes with 67-storey, rising high in the sky with awe-inspiring views of Dubai.

Finishing and materials

Extra large format Porcelain tile. Pre-Engineered timber flooring. Contemporary & stylish Carpet. Veneer finished solid core tall & elegant doors. Marble & Solid surface counter tops. Doubly Glazed Floor to Ceiling glass curtain wall. Leatherette & rich veneer finished wardrobes. Clear heights of 3 meters in Living areas. Smart Home automation enabled. State-of-art home appliances. Elegant Single slot diffusers. Flexi track lighting.

Kitchen and appliances

Kitchens will come fully-fitted and will be equipped with Miele fittings and marble and solid surface countertops. Smart home system and state-of-the-art home appliances will also be offered in Sobha Seahaven.

Furnishing

No. Bedroom wardrobe in all units

Location description and benefits

Sobha Seahaven located in the Mouth of Dubai Harbour. Residents of this development can get to other areas of the emirate, as well as to key attractions and landmarks, in just a several-minute drive thanks to direct access to the Sheikh Zayed Road. For instance, Downtown Dubai with the iconic Burj Khalifa, The Dubai Mall and Business Bay, which is the business center of the emirate, are reachable within a 20-minute drive from your apartment. Dubai Harbour is located at the intersection of the iconic Palm Jumeirah and Bluewaters, equidistant from Dubai International Airport and Al Maktoum International Airport. This unique waterfront neighbourhood is a stone's throw away from the city's most-loved landmarks, beautiful beaches and world-famous attractions such as Ain Dubai and Burj Al Arab. Embrace the call of the sea at Dubai Harbour. An extraordinary seafront district that seamlessly merges a range of F&B and retail offerings with VIP, living, and hospitality experiences, Dubai Harbour is also home to the most advanced cruise terminal and the largest marina in the region.

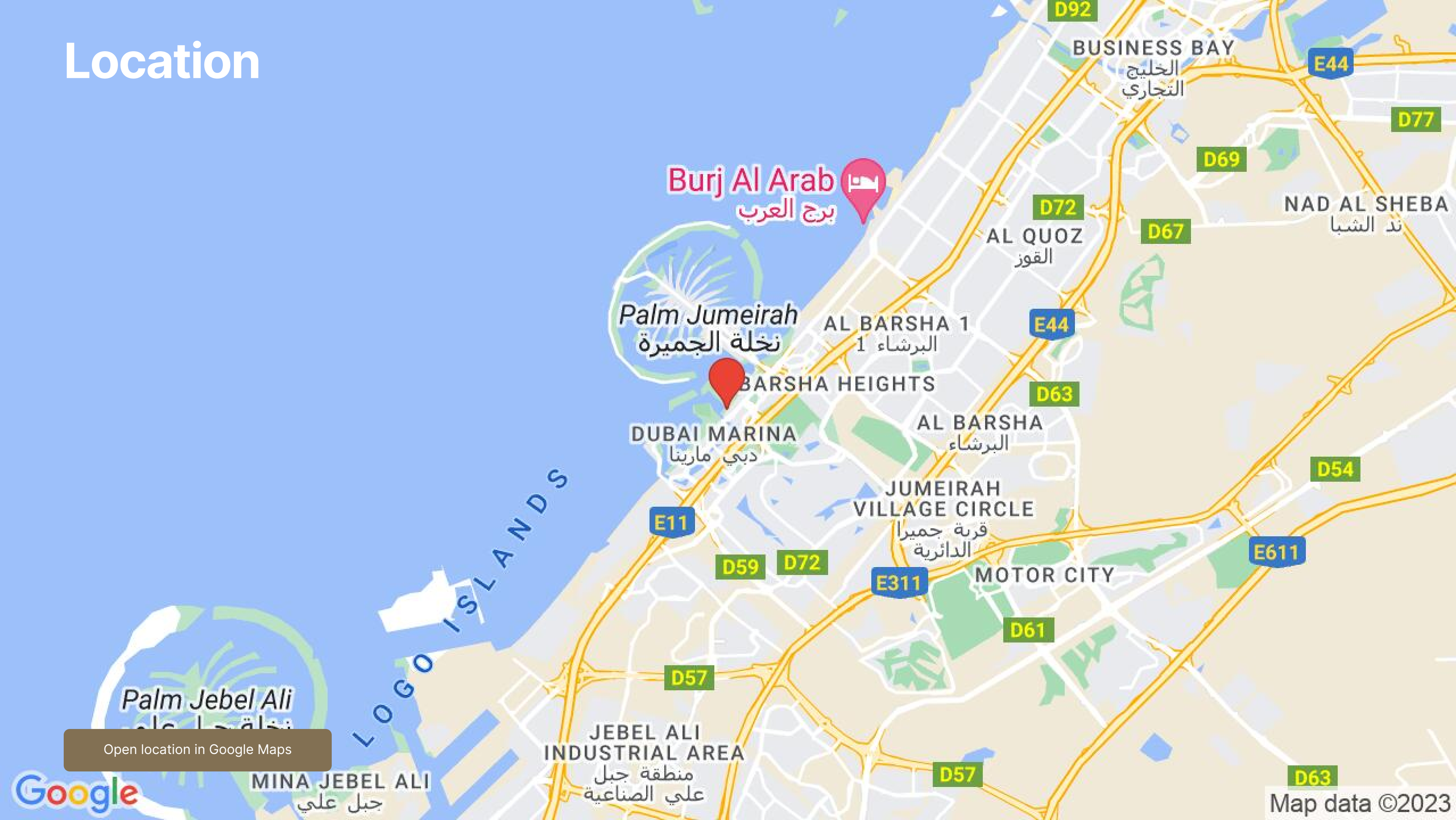
Architecture



Interior



Location



Open location in Google Maps



Facilities



Swimming pool

Visualisation from developer



Health club

Visualisation from developer



Outdoor Cinema

Image for general understanding



Skate park

Image for general understanding



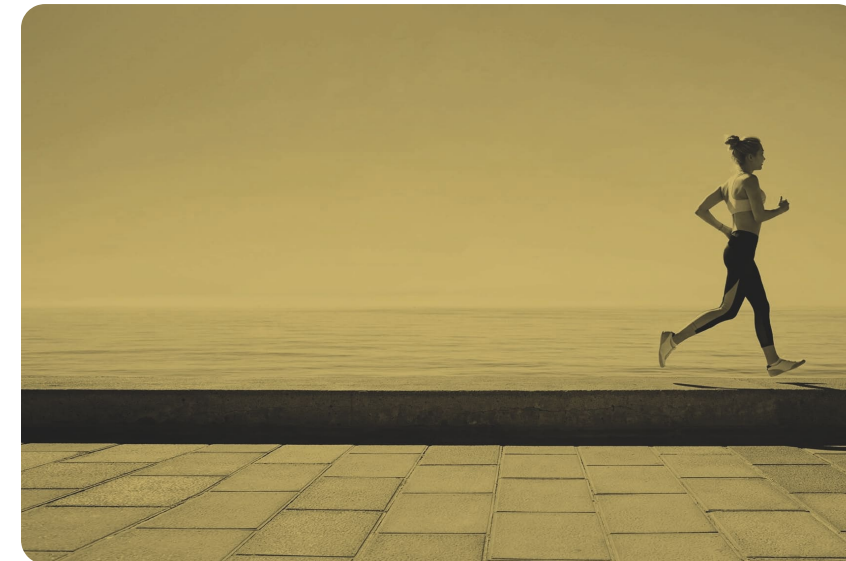
Kids pool

Image for general understanding



Sauna and steam

Image for general understanding



Walking track

Visualisation from developer



Dining places

Visualisation from developer

Facilities



Water sport

Visualisation from developer



Family zone with BBQ area

Visualisation from developer

Payment plan



Payment plan

20% payment	On booking
40% payment	During construction
40% payment	Upon Handover

Condition for the unit resale

**Full floor or more than 30
mln-34% Other units - 50 + 4%**

Typical units and prices



Apartments

1 bedroom

FROM

EUR 787,981

850 sqft / 79 m²

TO

EUR 1,389,842

1244 sqft / 116 m²



Apartments

1,5 bedroom

FROM

EUR 1,182,364

1193 sqft / 111 m²

TO

EUR 1,275,822

1242 sqft / 115 m²



Apartments

2 bedroom

FROM

EUR 1,590,736

1716 sqft / 159 m²

TO

EUR 1,924,054

1928 sqft / 179 m²

Typical units and prices



Apartments **3 bedroom**

FROM **EUR 2,326,835** TO **EUR 5,356,528**
 2375 sqft / 221 m² 3749 sqft / 348 m²



Penthouse **4 bedroom**

FROM **EUR 5,571,599** TO **EUR 10,584,738**
 4044 sqft / 376 m² 7285 sqft / 677 m²



Penthouse **3 bedroom**

FROM **EUR 6,884,678** TO **No info**
 4186 sqft / 389 m²

Typical units and prices



Penthouse

5 bedroom

FROM

EUR 12,823,318

7815 sqft / 726 m²

TO

EUR 13,494,909

8217 sqft / 763 m²



Penthouse

6 bedroom

FROM

EUR 26,386,632

16205 sqft / 1505 m²

TO

EUR 39,728,842

24399 sqft / 2267 m²

Do you have any questions? Contact me.



Jan Petrovic

Phone

+38640772980

Email

info@petrodeluxe.si

Instagram



WhatsApp



Email

