

🕒 Completion - DEC 2027

Elwood

The Valley



Jan Petrovic

Slovenia

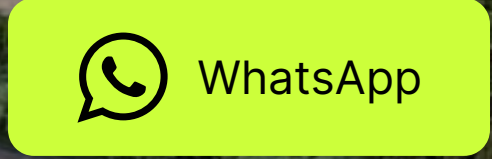
Verified Agent

Phone +38640772980


Email info@petrodeluxe.si

Website


Instagram:




Elwood

 Furnishing - Semi-furnished

 Parking -

 Floors - G + 1floor, G + 2floors

 Service charge - 5 AED/sqft

Project general facts

Nestled within the serene and sustainable community of Sobha Elwood, the Elwood Estates offer an unmatched living experience. These exquisite villas, available in 4, 5, and 6 bedroom configurations, are thoughtfully designed to immerse residents in a natural & tranquil environment. Drawing inspiration from nature's canvas, these villas are adorned with earthy tones, expansive spaces and large windows that invite abundant natural light.

Here, every moment is an opportunity to connect with nature and enjoy the finest comforts of modern living. Sobha Elwood merges modern design with lush greenery, creating a harmonious living experience. Their vision emphasizes sleek aesthetics and seamless indoor-outdoor spaces.

Each unit within this project offers a unique interpretation of modern living, tailored to different lifestyles but united by a common theme of elegance, functionality, and a deep connection to nature. The designs reflect a commitment to creating spaces that are not only beautiful but also enhance the well-being of their inhabitants.

Finishing and materials

Finished with modern materials and textures, double glazed facade, system smart home.

Kitchen and appliances

Fully fitted kitchen.

Furnishing

Semi-furnished apartments with luxury walk in wardrobe.

Location description and benefits

The Valley is an emerging residential area known for its modern infrastructure and family-friendly environment. The district offers a harmonious blend of contemporary architecture and well-planned urban living.

The amenities in The Valley are designed to cater to a comfortable and convenient lifestyle. Residents have access to a variety of retail outlets, dining options, and entertainment venues within the district. Additionally, there are several schools, healthcare facilities, and recreational parks, ensuring that all essential needs are met within close proximity.

Living in The Valley is ideal for those seeking a balanced lifestyle away from the hustle and bustle of the city center. The district's strategic location provides easy access to major highways, making commuting to other parts of Dubai seamless. Furthermore, the emphasis on community living, safety, and high-quality amenities makes it an attractive choice for families and individuals alike.

Architecture



Architecture



Interior



Location



[Open location in Google Maps](#)



Facilities



Jogging Track

Visualisation from developer



Cycling Track

Visualisation from developer



Outdoor Kids Play Area

Visualisation from developer



Gardens

Visualisation from developer



BBQ Area

Visualisation from developer



Clubhouses

Visualisation from developer



Swimming Pools

Visualisation from developer



Baobab Tree Court

Visualisation from developer

Facilities



Basketball Court

Visualisation from developer

Payment plan



Payment Plan

20% payment	On booking
40% payment	During construction
40% payment	Upon Handover

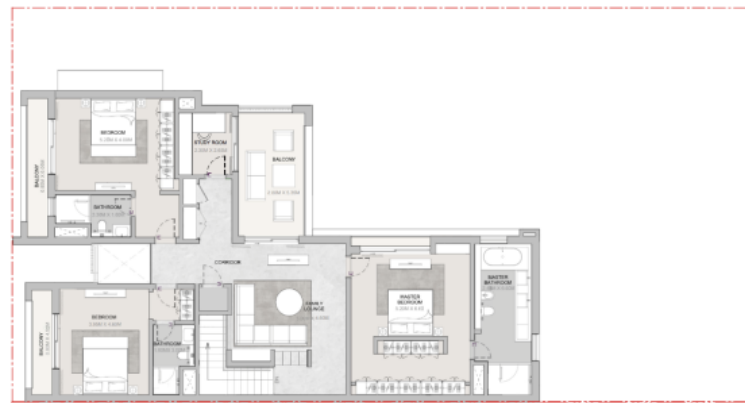
Booking deposit **4BR-200k, 5BR-250k, 6BR-300k
AED**

Condition for the unit resale **Not specified**

Typical units and prices



Ground Floor



First Floor

Villa

4 bedroom + pool

FROM

EUR 1,987,205

4958 sqft / 461 m²

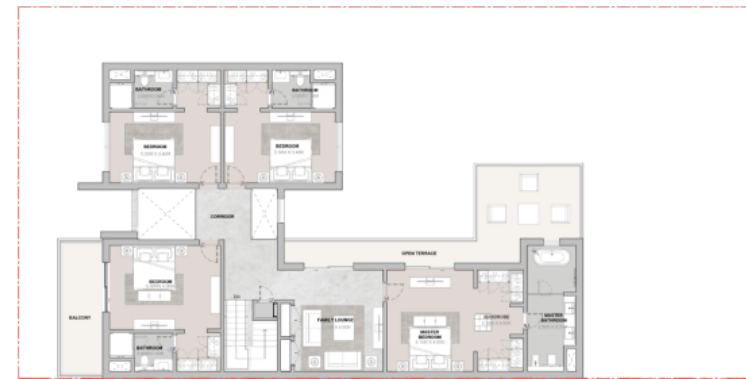
TO

EUR 2,064,521

4995 sqft / 464 m²



Ground Floor



First Floor

Villa

5 bedroom+pool

FROM

EUR 2,324,631

5800 sqft / 539 m²

TO

EUR 2,400,347

5807 sqft / 539 m²



Ground Floor



First Floor



Second Floor

Villa

6 bedroom + pool

FROM

No info

TO

No info

Do you have any questions? Contact me.



Jan Petrovic

Phone

+38640772980

Email

info@petrodeluxe.si

Instagram



WhatsApp



Email

