

🕒 Completion - Q2 2025

Binghatti Phoenix

Jumeirah Village Circle (JVC)



Jan Petrovic

Slovenia

🔒 Verified Agent

Phone

+38640772980

Email

info@petrodeluxe.si

Website

Instagram:

 WhatsApp

 Email




BINGHATTI
بن عايطي


Binghatti

Binghatti Phoenix

 Furnishing - No

 Parking -

 Floors - B + G + 1P +
8floors + R

 Service charge - 12-15
AED/sqft

Project general facts

Binghatti Phoenix emerges as a poetic tribute to renewal and resilience, standing tall as a symbol of architectural brilliance. Its exterior façade, adorned with fluid lines reminiscent of the ebb and flow of life, captures the essence of human existence. Inside, every detail is meticulously crafted to echo this theme, boasting regal finishes and a harmonious color palette that invites residents to embrace a sense of renewal and vitality.

The hallmark of Binghatti Phoenix lies in its ability to seamlessly blend timeless elegance with contemporary innovation. Each space within the property is carefully designed to reflect this ethos, offering residents a sanctuary that transcends the ordinary. From studios to one-bedroom and two-bedroom units, every corner of Binghatti Phoenix is a testament to thoughtful design and meticulous craftsmanship, catering to the diverse needs and preferences of its discerning clientele.

Finishing and materials

The interiors boast impeccable quality finishes, blending modern aesthetics with timeless elegance.

Kitchen and appliances.

Equipped kitchen

Furnishing

No

Location description and benefits

The dynamic real estate landscape of Dubai: renowned for its iconic skyline, world-class infrastructure, and vibrant cosmopolitan culture, Dubai stands as a beacon of progress in the Middle East and beyond. The emirate's robust economy and pro-business policies, including tax incentives, foreign ownership rights and streamlined regulations facilitate ease of investing, offering opportunity to be part of the dynamic growth that transcends boundaries.

The advantageous location of Binghatti Phoenix ensures residents seamless connectivity to Dubai's major destinations. Situated just 7 minutes away from Dubai Hills Mall, 17 minutes from Burj Khalifa, and 24 minutes from Dubai International Airport, residents enjoy convenient access to key landmarks. Its strategic positioning also provides easy reach to various amenities within JVC, including Circle Mall, Spinneys, Grandiose, Choithams, JSS International School, Dubai International Academy, as well as numerous parks and clinics, enhancing the overall lifestyle experience for residents.

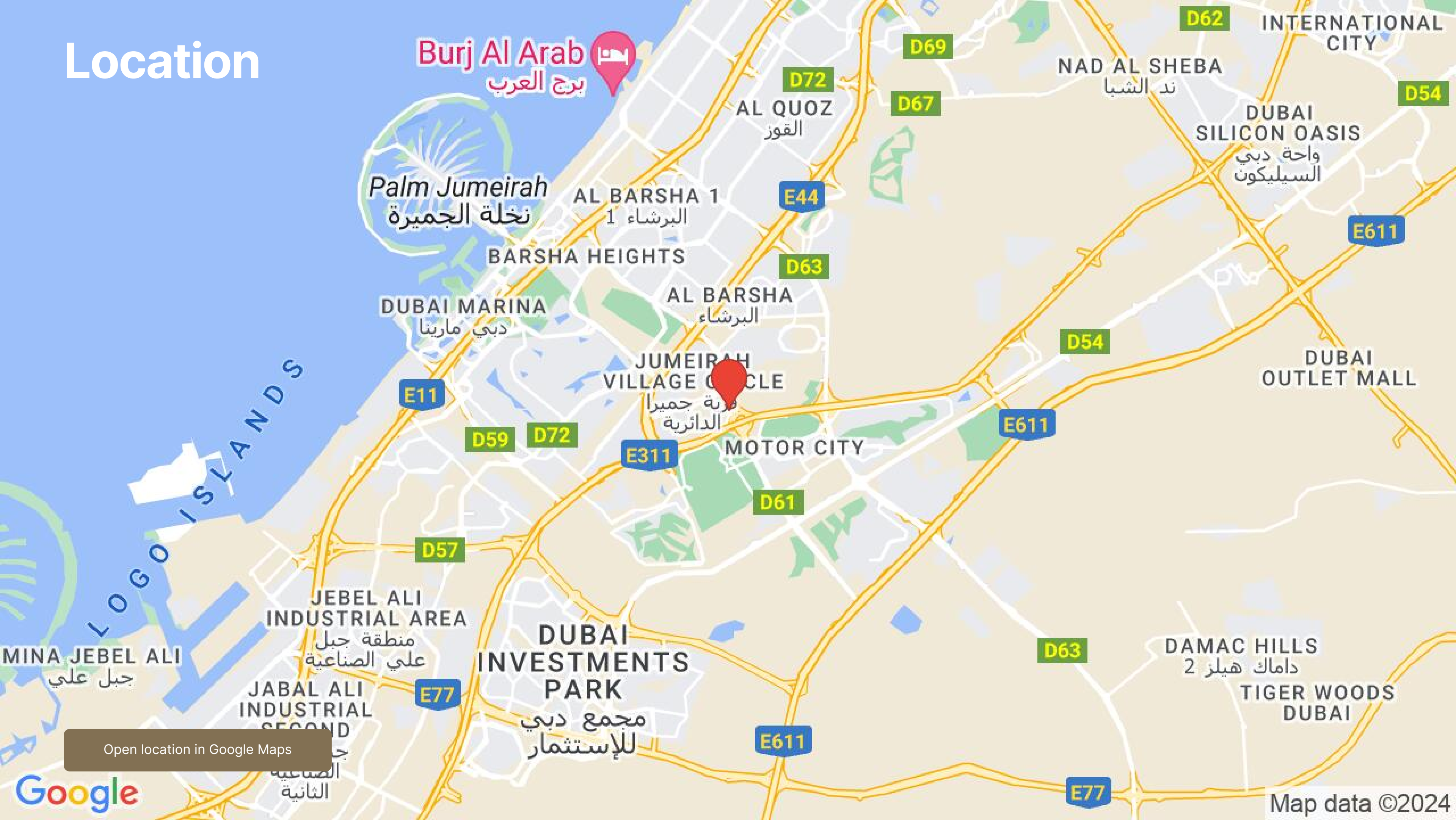
Architecture



Interior



Location



Burj Al Arab
برج العرب

Palm Jumeirah
نخلة الجميرة

AL BARSHA 1
البرشاء 1

BARSHA HEIGHTS

DUBAI MARINA
دبي مارينا

AL BARSHA
البرشاء

JUMEIRAH VILLAGE CIRCLE
قرية جميرا
الدائرية

MOTOR CITY

JEBEL ALI
INDUSTRIAL AREA
منطقة جبل
علي الصناعية

JABAL ALI
INDUSTRIAL
SECOND

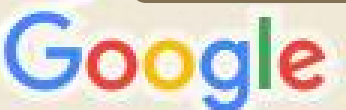
DUBAI
INVESTMENTS
PARK

مجمع دبي
للإستثمار

DAMAC HILLS
داماك هيلز 2

TIGER WOODS
DUBAI

Open location in Google Maps





BURJ
AL ARAB

E44 DUBAI
ALKHAIL ROAD

BINGHATTI
PHOENIX

HESSA
STREET

E311 SHEIKH
MOHAMMAD BIN
ZAYED ROAD

DOWNTOWN
DUBAI

Facilities



Kids Play Area

Image for general understanding



Swimming Pool

Image for general understanding



Paddle Court

Image for general understanding



Golf Putting

Image for general understanding



Outdoor Yoga

Image for general understanding



Outdoor Gym

Image for general understanding

Payment plan



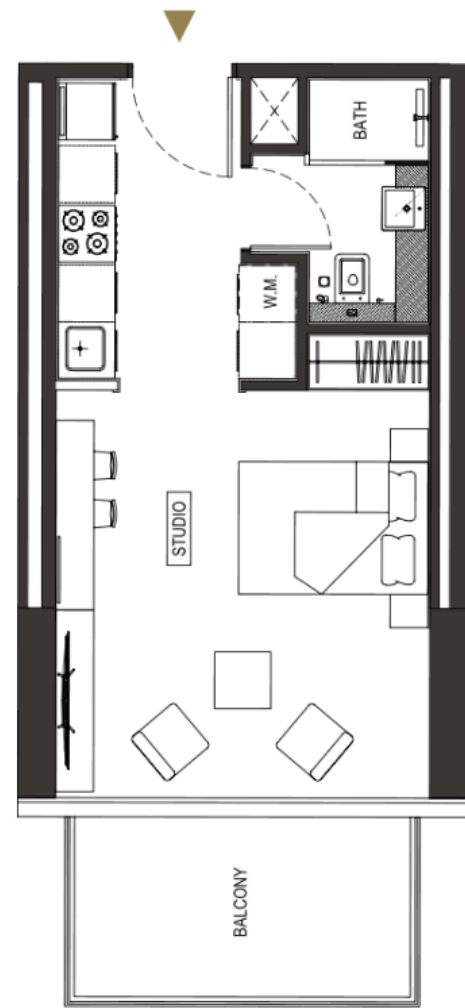
Payment Plan

10% payment	On booking
60% payment	During construction
30% payment	Upon Handover

Condition for the unit resale

Not specified

Typical units and prices



Apartments

Studio

FROM

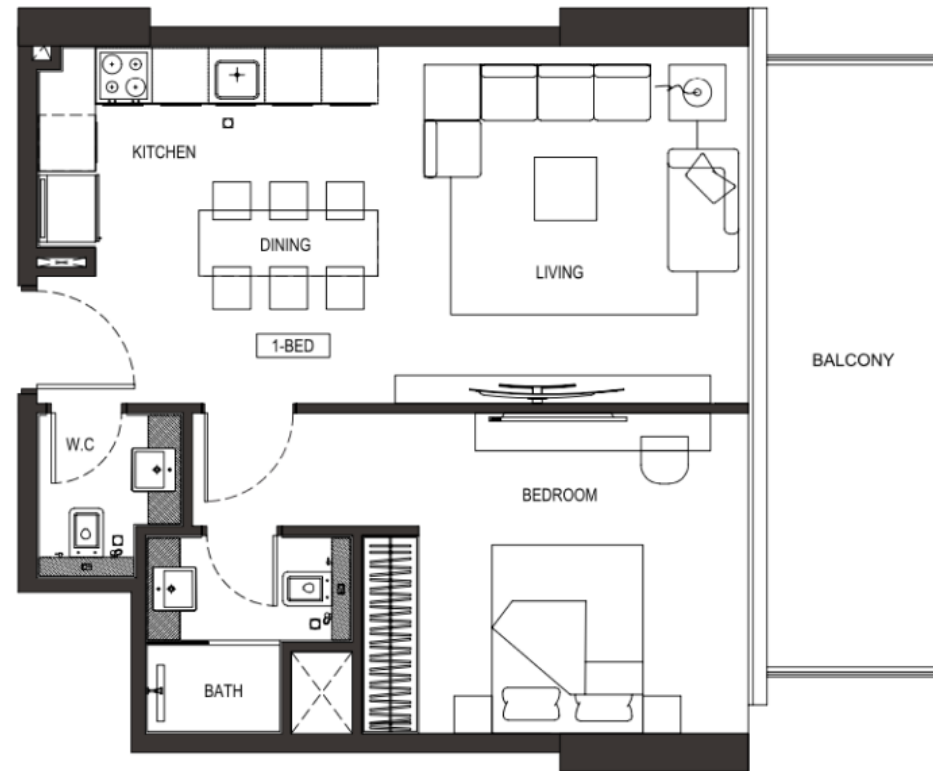
EUR 227,026

426 sqft / 40 m²

TO

EUR 243,529

518 sqft / 48 m²



Apartments

1 bedroom

FROM

EUR 348,070

755 sqft / 70 m²

TO

EUR 381,396

848 sqft / 79 m²



Apartments

2 bedroom

FROM

EUR 499,458

1146 sqft / 106 m²

TO

EUR 575,238

1197 sqft / 111 m²

Do you have any questions? Contact me.



Jan Petrovic

Phone

+38640772980

Email

info@petrodeluxe.si

Instagram



WhatsApp



Email

