

🕒 Completion - DEC 2026

Armani Beach Residence

Palm Jumeirah



Jan Petrovic

Slovenia

 **Verified Agent**

Phone

+38640772980

Email

info@petrodeluxe.si

Website

Instagram:



Arada




WhatsApp



Email




Armani Beach Residence

 Furnishing - Optional furnished

 Parking -

 Floors - G + 8floors

 Service charge - 35-40 AED/sqft

Project general facts

Armani Beach Residences at Palm Jumeirah once again brings together two of the world's most renowned cultural figures: Giorgio Armani and Tadao Ando. With a partnership stretching back over two decades, Giorgio Armani and Tadao Ando have been united by their mutual respect and admiration. Brought together by master developer Arada, Armani Beach Residences at Palm Jumeirah is the first and only time that these masters of their craft have collaborated on a residential offering.

Setting a new standard for ultra-luxury living, Armani Beach Residences at Palm Jumeirah is located on the shores of Dubai's famous manmade islands, one of the world's most exclusive residential neighborhoods. Enjoying sweeping, panoramic views of the Arabian Gulf as well as Dubai's famed skyline, Armani Beach Residences at Palm Jumeirah is designed to achieve harmony between architecture, the surrounding seascape and the senses.

The magnificent elevated entry experience sets the tone, providing residents with extravagant ocean views from a range of angles. Throughout the building, the interplay of light and shadow amplifies a series of stylish design elements, including the overhanging arch and the many water features and pools.

Alongside its exemplary architecture and seafront setting, Armani Beach Residences at Palm Jumeirah is distinguished by a set of amenities like no other, allowing residents to experience a truly ultra-luxury lifestyle. This collection of high-end facilities includes a premium residents-only spa, a function room, cigar lounge and landscaped deck area, as well as a private beach. Exquisite interiors at these amenities merge with limited edition pieces individually designed by Giorgio Armani himself to create a unique style with a distinct and sophisticated aesthetic.

Finishing and materials

All living spaces and bedrooms contain highend fittings provided by Armani/Casa, including designed kitchens and bathrooms, wallpaper with metal profiles, metal skirting and spotlights. In addition, all owners may choose between a light and dark overall design palette for their furnishings. The residences contain a circular or linear foyer, a signature Armani concept, which acts as a transition between the public area and the private space of the apartment and generously proportioned heights, reaching at least 3 metres for living areas.

All bathroom fixtures and fittings provided by the Armani/Casa Island Collection. The Armani/Casa bathroom collection is the expression of elegant simplicity and total harmony, both quintessential of Giorgio Armani's unmistakable style, captured in the bathroom space

Kitchen and appliances

Residences contain open display kitchens that feature joinery work and accessories from Armani/Casa's Checkers

Collection for the light palette and Bridge Collection for the dark palette. Closed kitchens come with an oven, fridge/freezer, dishwasher, washing machine/drier.

Furnishing

Unfurnished apartments & Optional furnishing Armani branded for presidential suits

Location description and benefits

Palm Jumeirah is a luxurious community located on an artificial island that is shaped like a palm tree, with a trunk, fronds, and a crescent-shaped breakwater that surrounds the island.

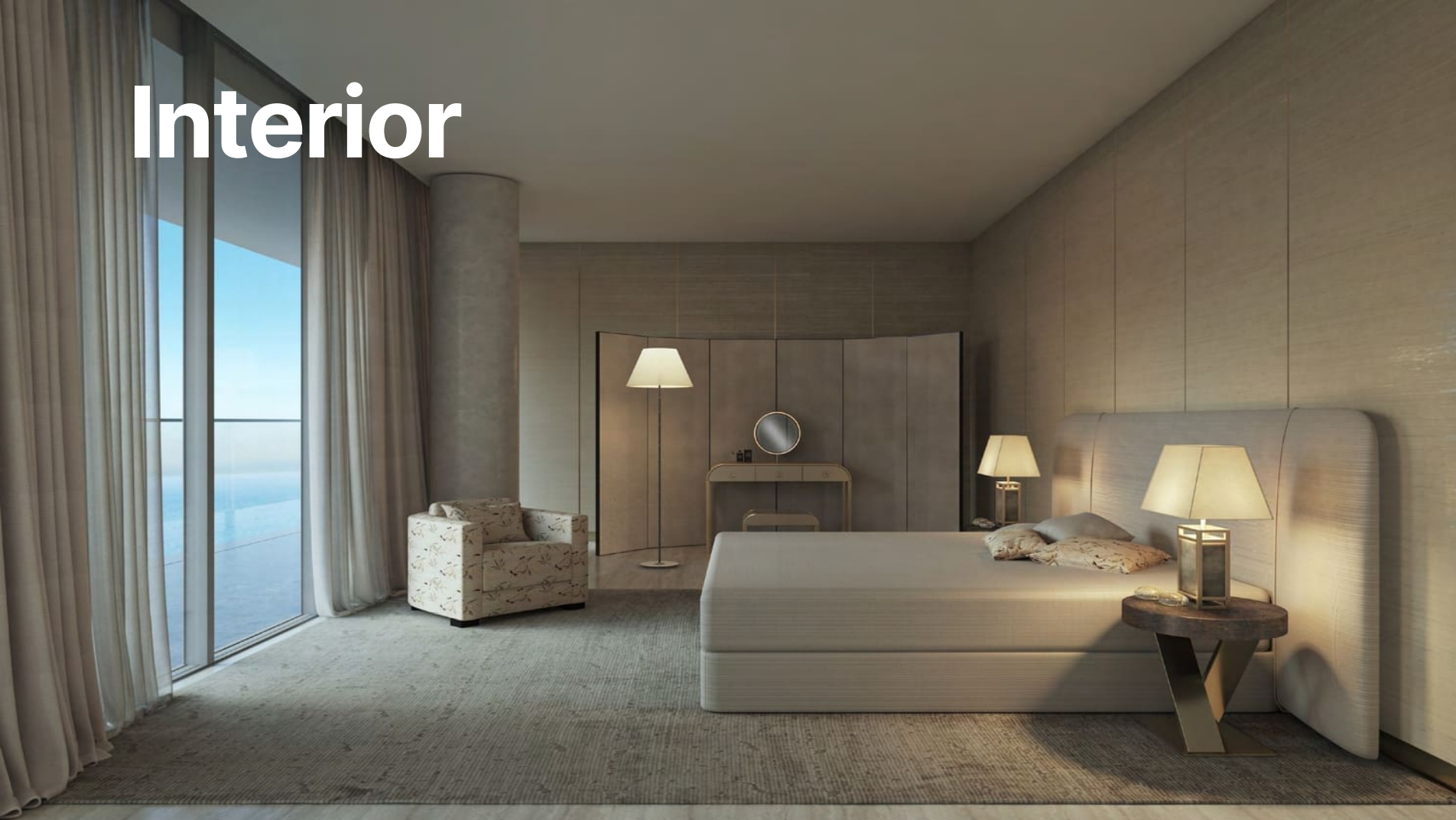
The community is home to a variety of high-end residential properties, including apartments, villas, and townhouses, as well as some of the most luxurious hotels and resorts in Dubai. The community is known for its stunning views of the Arabian Gulf, its pristine beaches, and its world-class amenities.

In addition to residential properties and hotels, Palm Jumeirah is home to a range of retail and dining options, including the iconic Atlantis, The Palm resort, which features an array of restaurants, bars, and entertainment venues. The island also boasts a range of recreational activities, including water sports, beach clubs, and golf courses.

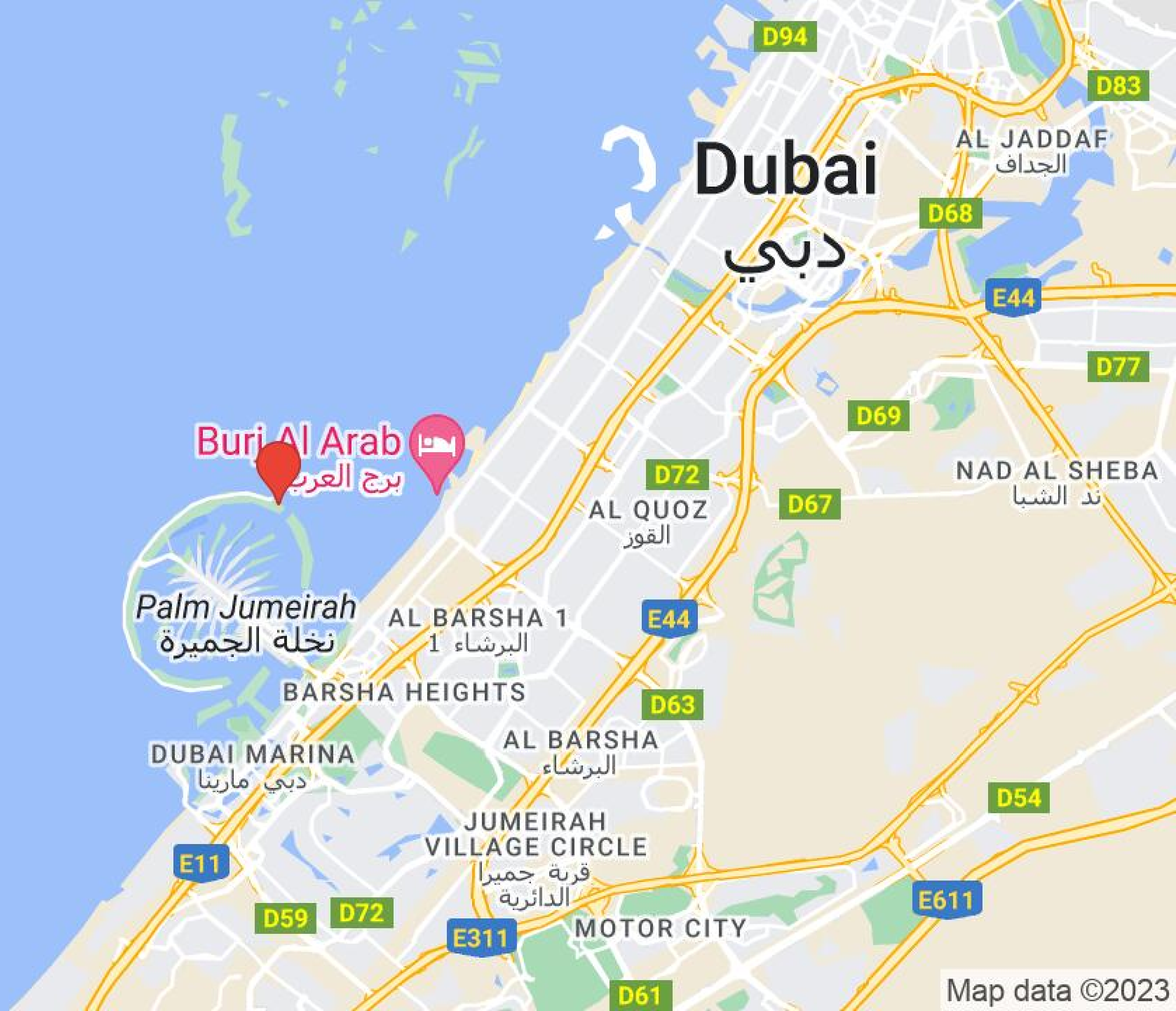
Architecture



Interior



Location



[Open location in Google Maps](#)





Facilities



Gym

Image for general understanding



Sauna & Ice-bath

Visualisation from developer



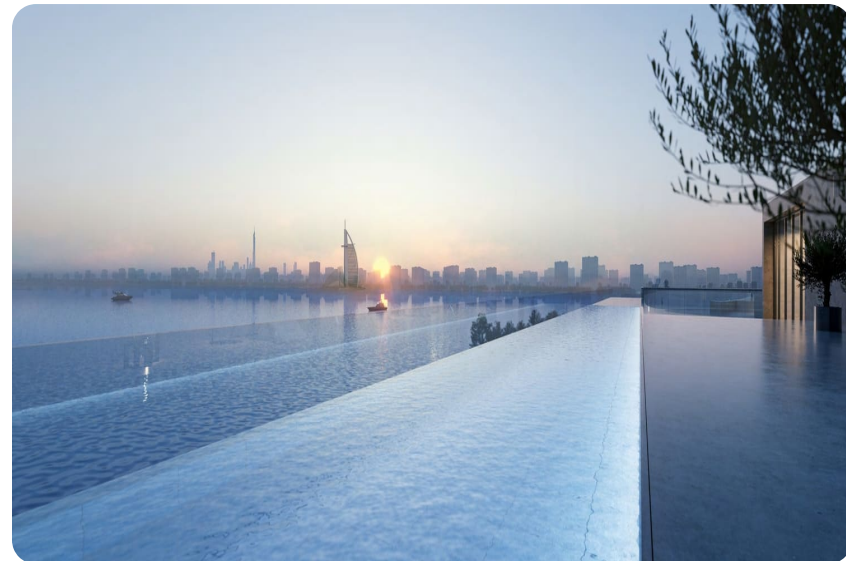
Indoor Swimming Pool

Visualisation from developer



Lushly Landscaped Deck Area

Visualisation from developer



Large-scale Infinity Pool

Visualisation from developer



Separate Children's Pool

Image for general understanding



Cigar Lounge

Image for general understanding



Private Beach

Image for general understanding

Facilities



Movie Theatre

Image for general understanding



Children's Playroom

Image for general understanding

Payment plan



Payment Plan

25% payment

On booking

35% payment

During construction

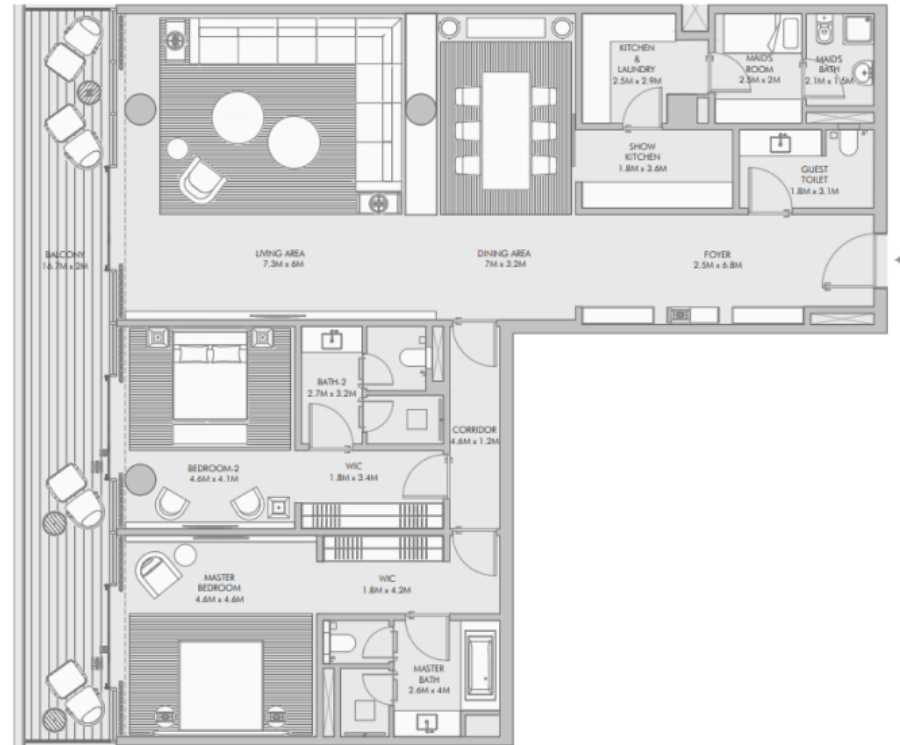
40% payment

Upon Handover

Condition for the unit resale

Not specified

Typical units and prices



Apartments

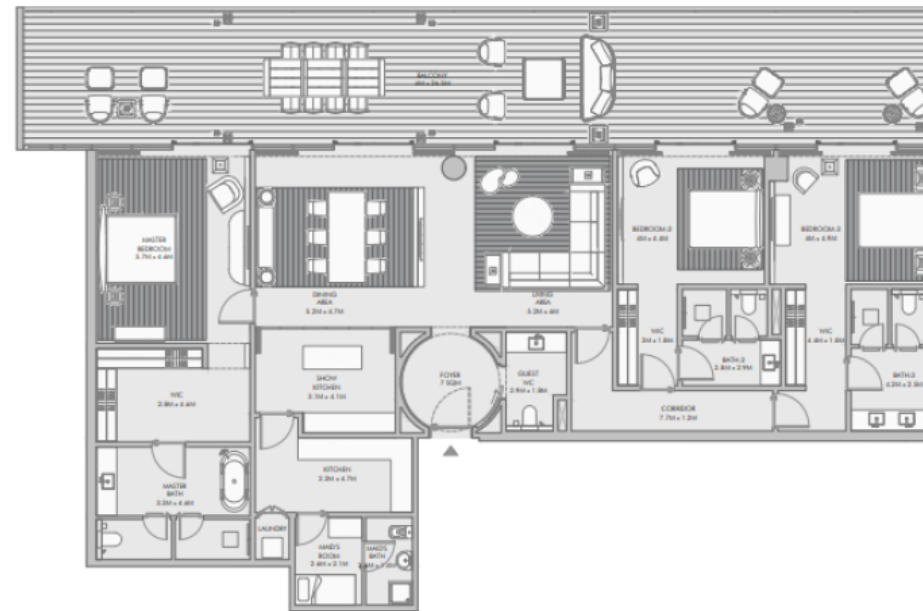
2 bedroom

FROM
EUR 5,761,776

TO
EUR 6,763,824

2657 sqft / 247 m²

3373 sqft / 313 m²



Apartments

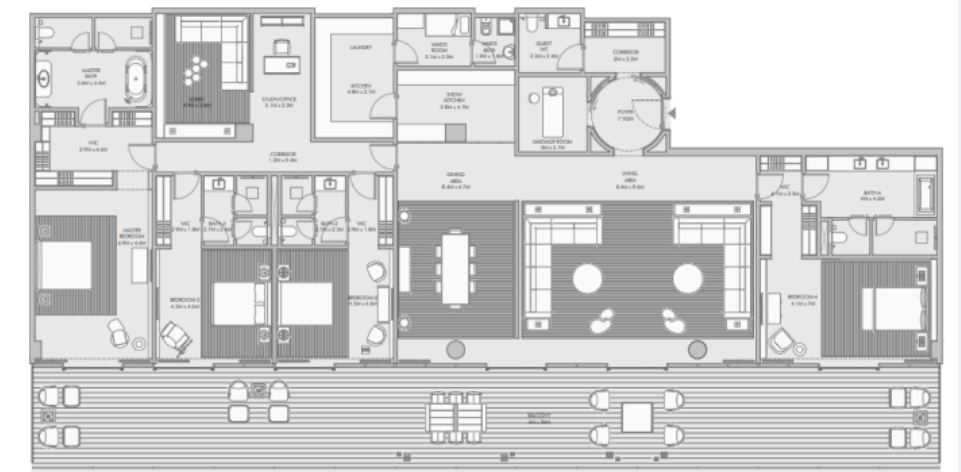
3 bedroom

FROM
EUR 9,394,200

TO
EUR 11,648,808

4652 sqft / 432 m²

5790 sqft / 538 m²



Apartments

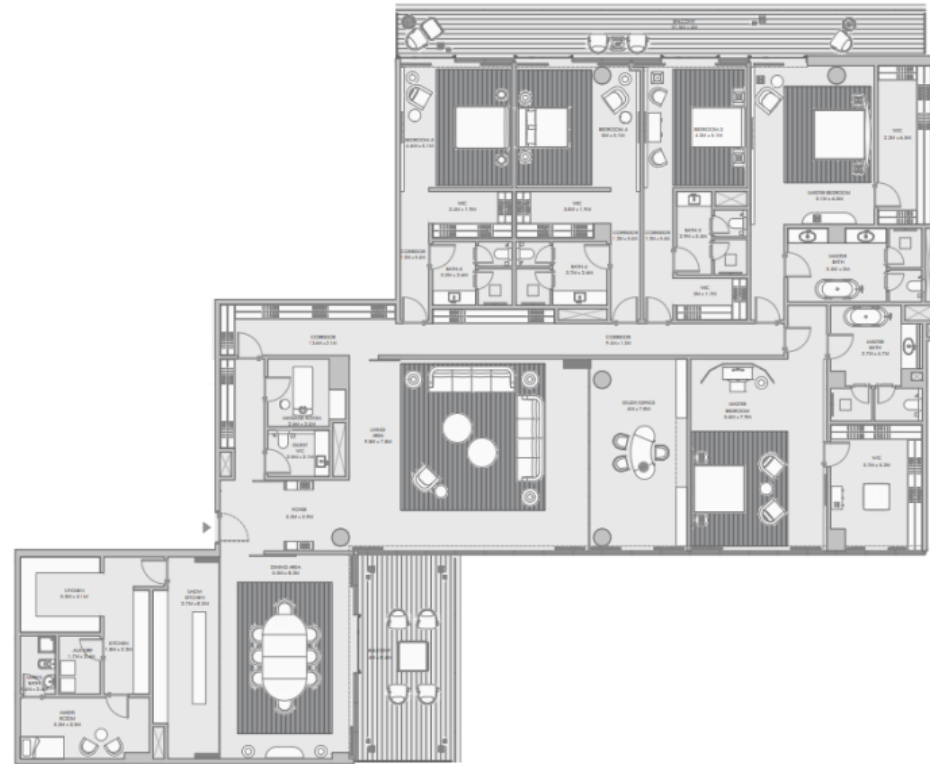
4 bedroom

FROM
EUR 14,404,440

TO
No info

7191 sqft / 668 m²

Typical units and prices



Apartments

FROM

No info

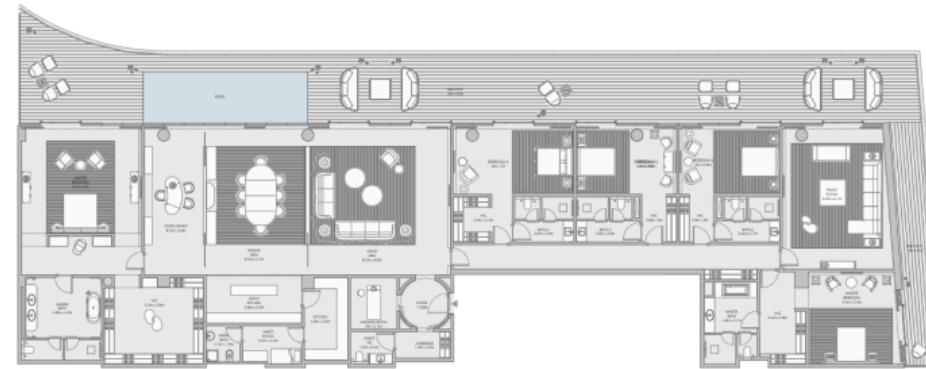
7500 sqft / 697 m²

5 bedroom

TO

No info

8500 sqft / 790 m²



Penthouse

FROM

No info

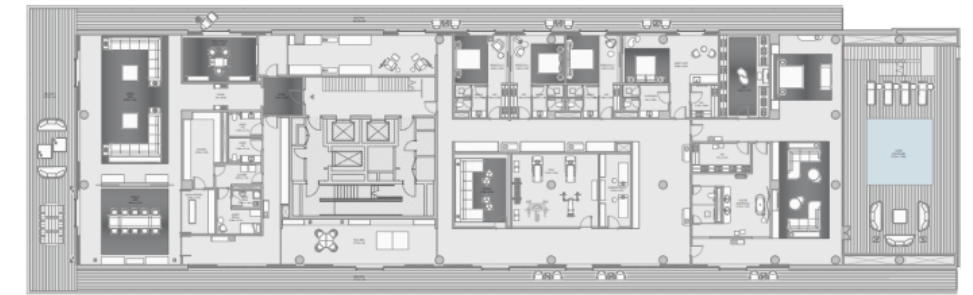
9500 sqft / 883 m²

5 bedroom

TO

No info

11600 sqft / 1078 m²



Suite

FROM

No info

30949 sqft / 2875 m²

5 bedroom

TO

No info

43830 sqft / 4072 m²

Do you have any questions? Contact me.



Jan Petrovic

Phone

+38640772980

Email

info@petrodeluxe.si

Instagram



WhatsApp



Email

